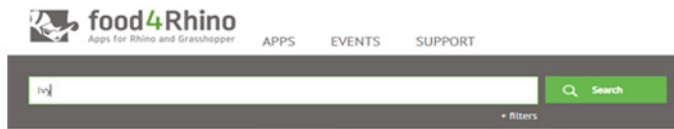


1

food4Rhino > Download GH plugins



Download the most recent plugin;  
note that Ivy102 is more recent than Ivy 092.

anemone1.gha

ivy102.zip

ivy092.zip

kangaroo242.zip

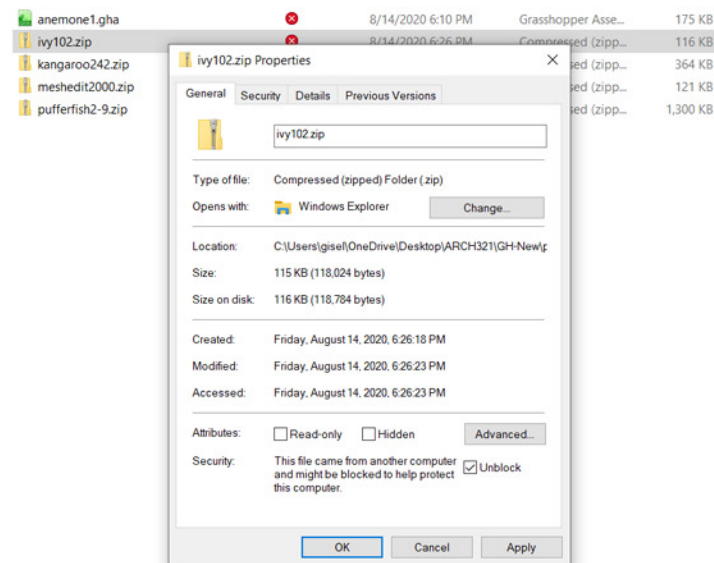
meshedit2000.zip

pufferfish2-9.zip

2

Unblock all zipped folders

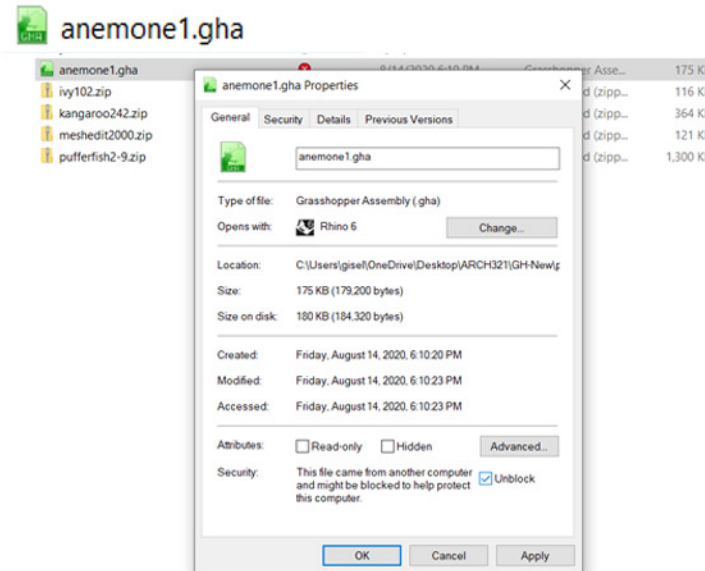
Right Click>Properties> ☒ Unblock



This step unblocks all files (.gha files, .dll files, and .ghuser files) that are in the zipped folders.

3

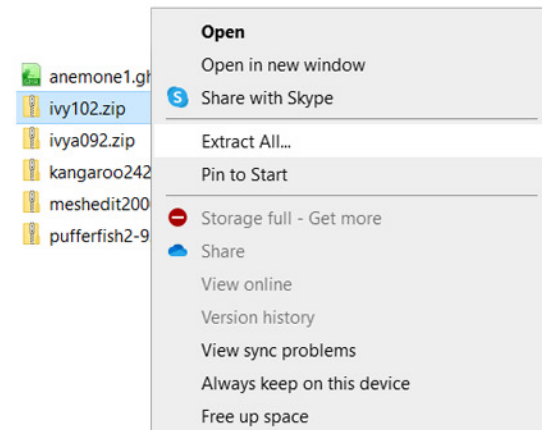
Unblock the plugin that downloaded as a single file  
Right Click>Properties> ☒ Unblock



4

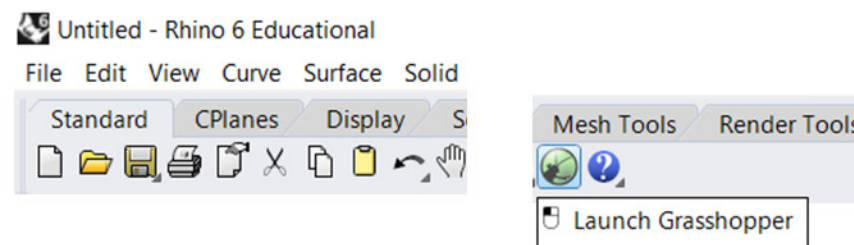
Unzip the folders

Right Click>Extract All



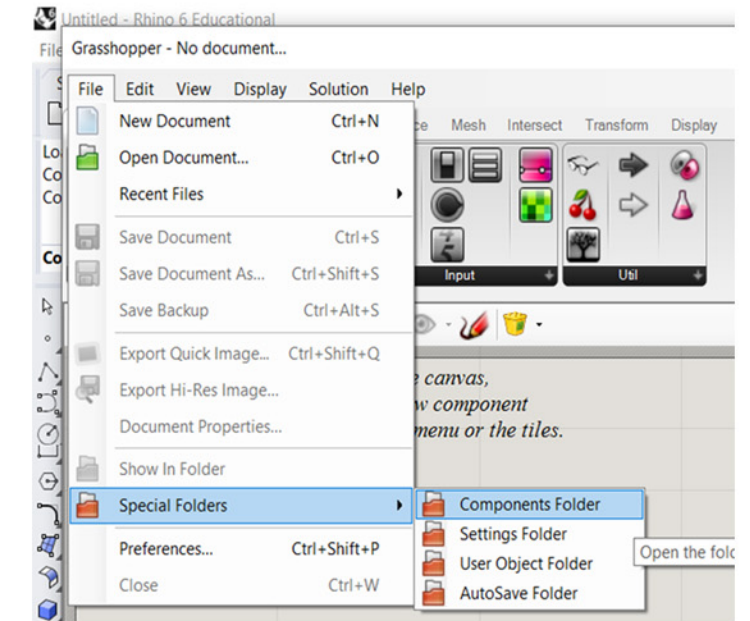
5

Open Rhino and launch Grasshopper



6

Drag the unzipped folders, that contain the .gha files and the .dll files, into the Components Folder  
File > Special Folders > Components Folder



Do NOT forget to drag the plugin **anemone.gha** into the Components Folder too.

This PC > OS (C:) > Users > your user name > AppData > Roaming > Grasshopper > Libraries >		
Name	Date modified	Type
ivy102	8/14/2020 6:28 PM	File folder
kangaroo242	8/14/2020 6:14 PM	File folder
LunchBox	8/14/2020 6:19 PM	File folder
meshedit2000	8/14/2020 6:14 PM	File folder
pufferfish2-9	8/14/2020 6:14 PM	File folder
anemone1.gha	8/14/2020 6:10 PM	Grasshopper Asse...



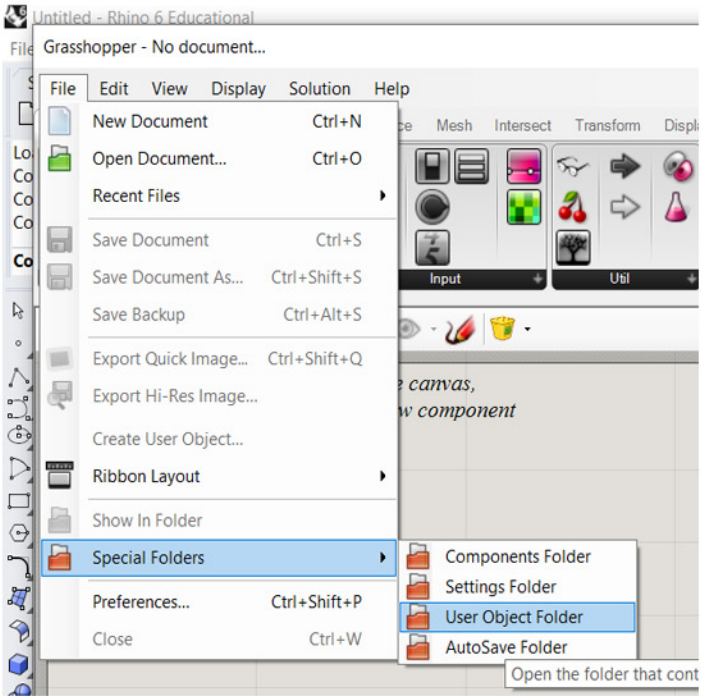
This screenshot shows the unzipped folders in the Components Folder, in Grasshopper.



Note the location of the Components Folder in the file system.

7

Drag the subfolders, that contain the **.ghuser** files, into the User Object Folder



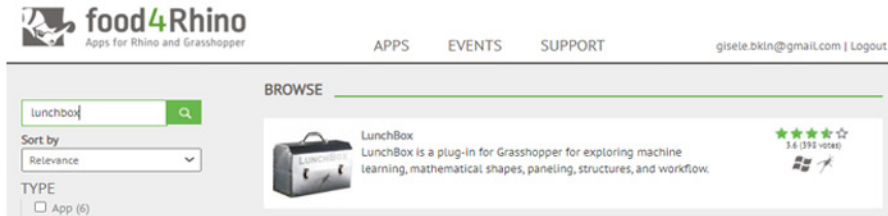
! Pufferfish contains a subfolder with **.ghuser** files.


! This screenshot shows the Pufferfish subfolder in the User Object Folder.

Note the location of the User Object Folder in the file system.

8

food4Rhino > Download Lunchbox installation file

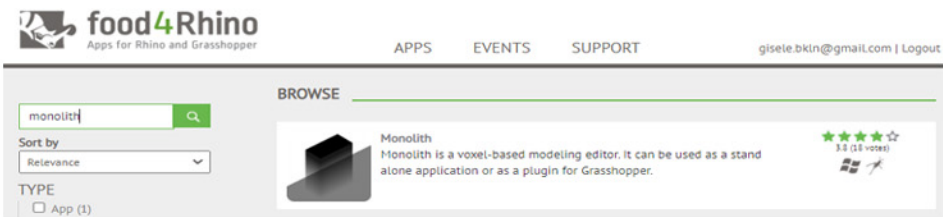



 **lunchbox.installer.application**

Lunchbox uses a stand-alone application.  
**It does NOT go into the Components Folder.**  
Install Lunchbox by running the installation file.

9

food4Rhino > Download Monolith installation file



 **Monolith\_0.3.6415.29557.msi**

Monolith uses a stand-alone application.  
**No need to copy the file into the Components Folder.**  
Install Monolith by running the installation file.

10

Giulio Piacentino > Download Weaverbird file




<http://www.giuliopiacentino.com/weaverbird/>

Download Weaverbird for Rhino 6, then Open the .gh file.  
Rhino will use the Package Manager to install Weaverbird.  
**Weaverbird does NOT go into the Components Folder.**

11

Run the GH Plugin test

Open the Grasshopper file entitled InstallTest

 **InstallTest.gh**

If the system encounters an error, take a screenshot of the error message to investigate it.

! Please note that the installation of GH plugins is only a small part of the first assignment.

12

Follow all instructions that are shared on Canvas to complete the assignment. Also, leave enough extra time before the due date to make sure your work is submitted successfully.